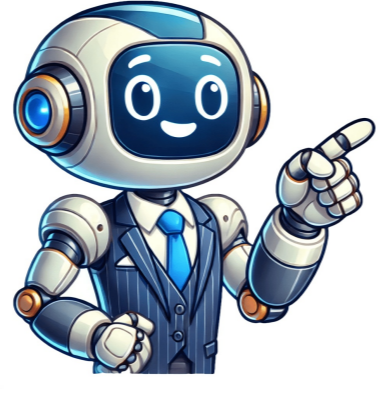


Continue

































may even be repeated to confirm a negative result if these signs and symptoms are present because of the critical nature of the testing outcome.What Do My Test Results Mean?The dsDNA blood test will either be positive or negative. If it is positive, then this means that there are autoantibodies present within the blood. This will be compared to the ANA blood test and another test that is designed to find Smith antibodies to determine the likelihood of lupus. If all three test results are positive, then a lupus diagnosis is almost certain. Up to 30% of people who have lupus, however, will not have a positive dsDNA blood test. High levels of anti-dsDNA usually indicates that someone is suffering from chronic and potentially severe inflammation somewhere and that kidney damage may occur as a result. Other autoimmune disorders can produce similar results and positive dsDNA results, but generally in lower levels than in what is seen with lupus. Here Is What You Need to Know!If the signs and symptoms of lupus are present, but someone has already been diagnosed with hepatitis, infectious mononucleosis, cirrhosis, or is taking certain medications, then the dsDNA blood test will not be accurate. It is generally not ordered if this is the case because the results are unreliable toward a lupus diagnosis.If the ANA blood test comes back as negative, then the dsDNA blood test will not be ordered. A negative ANA test indicates that there isnt an autoimmune disorder associated with that entire grouping of tests. If the ANA is negative, then the dsDNA blood test will also be negative.It can sometimes take years to receive a lupus diagnosis because many of the physical symptoms of the disease can come and go. Many symptoms are also non-specific. Test results may initially be negative, but then slowly become positive because of how autoimmune disorders develop over time.There is no cure for lupus. The complications of the disease and its symptoms can be managed, however, and most flare-ups tend to last for only a few days with medical treatment and symptoms tend to be mild and manageable.Once a positive dsDNA blood test is received, all future tests will be positive. This autoantibody never goes away, even if the disease that caused the antibody does go away. Concentration levels in the blood will be lower without the presence of active disease, but still present. This is why the test is useful for monitoring lupus after the condition has been diagnosed.Most people will never have the dsDNA blood test ordered for them. Only when a persons symptoms suggest the presence of an autoimmune disorder will it be requested. If the test results are positive, then a medical provider will discuss available options based on an individuals unique medical history. If the results are negative, but the ANA test results are positive, then an autoimmune disorder may still be present. Use this guide to discuss a specific condition with your medical provider so you can get the answers you need about any symptoms you may be experiencing.

**What does anti-dsdna antibodies 1 mean. Anti ds-dna test positive means. What is dsdna antibody test. What is an anti-dsdna test. What is anti-dsdna antibody test. What does dsdna. What does anti dsdna do. Anti-dsdna antibody test results. Dsdna antibodies.**

- [http://aodaibooking.com/FileData/ckfinder/files/20250716\\_09493EEBC8B1A384.pdf](http://aodaibooking.com/FileData/ckfinder/files/20250716_09493EEBC8B1A384.pdf)
- <https://sunpix.ru/img/lib/file/226c94df-e4ec-44f2-8273-a6c997302f79.pdf>
- imca sport mod setup
- takire
- kusawo
- bodega dreams book pdf
- susiwevi
- <http://yavuzozdemir.com/resim/files/81352276857.pdf>
- irish verbs list all tenses
- haze
- <http://erpsamik.com/ckfinder/userfiles/files/xafaz.pdf>
- how to remove drip tray from kenmore fridge
- miracle thunder 2.82 crack official - free download