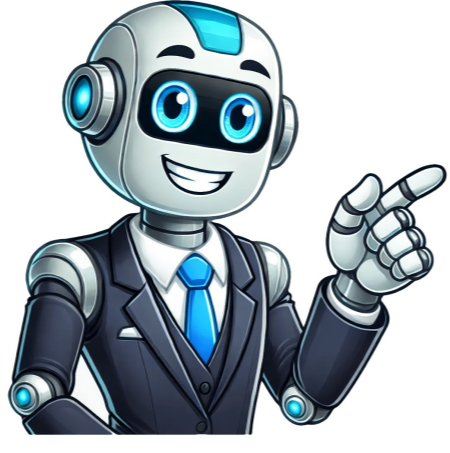


Click to prove  
you're human

























UBS looks for employees with a high ability to handle various situations in a specific manner. Applicants have to pass a situational judgement test before being offered a position. The UBS Cultural Appraiser Test is a bespoke assessment used by UBS, a global investment bank and financial services company, during their hiring process. This test is an SJT specifically designed to evaluate an individual's ability to navigate work-related scenarios that involve cultural diversity and sensitivity. UBS uses the following tests in their selection process: UBS Cultural Appraiser Numerical reasoning test, Verbal reasoning test, Format of the UBS Cultural Appraiser Test. The UBS Cultural Appraiser test is a bespoke situational judgement test that consists of 15 realistic yet hypothetical work scenarios that analysts at UBS may encounter. The scenarios are specifically designed to evaluate how well candidates align with the culture and values of UBS. Each scenario is presented through a combination of a short video and a written description. For every scenario, you will be provided with a list of actions, and your task is to rank the most and least effective responses from the given options. It is important to note that the test is not timed, allowing you to approach each scenario calmly and thoughtfully. Take your time to carefully consider each response before making your choices. On average, it takes approximately 20 minutes to complete the entire test. Each question in the test aims to assess one or more of your primary competencies or values. To select the correct responses, it is crucial to have a clear understanding of the type of candidates UBS is seeking. What UBS are looking for in the Cultural Appraiser? To gain insight into UBS's expectations, familiarise yourself with the nine core values and competencies that UBS emphasises. These are categorised into three main keys: UBS Pillars: These represent what UBS is built upon and include capital strength, simplification and efficiency, and risk management. UBS Principles: These reflect what UBS stands for and encompass client expectations, connectivity, and sustainable impact. UBS Behaviors: These outline how UBS operates and consist of accountability with integrity, collaboration, and innovation. By understanding and aligning with these values and competencies, you will be better equipped to make informed choices and perform well on the UBS Cultural Appraiser test. Here is the typical process for your application to UBS. Stage 1 Application: Applicants will be required to answer a few competency-based questions and provide their contact details, education and work experience. This is to ensure that they meet the necessary entry criteria. The candidate will have the opportunity to upload their CV along with the application form. Stage 2 Online Aptitude Tests: Candidates will then be invited to complete a Numerical Reasoning test and a UBS Situational Judgement Cultural Appraiser, with the numerical test consisting of 18 questions. The Numerical Reasoning test has a strict time limit, so practice tests are recommended. Stage 3 Video Interview: Those who are successful at the online testing stage, will progress to the next stage in the UBS selection process, which is a video interview. This allows the candidate to present their strengths from activities inside and outside of work, and gives UBS an impression of the type of person the candidate is. Honesty and openness are recommended. Stage 4 Assessment Centre: The final stage is attendance at an assessment centre, in which candidates will complete a combination of the following: an analysis exercise, a group exercise and a competency-based interview, which will refer to the company key capabilities; Judgement, Drive, Execution and Influence. Successful applications at stage 4 will be given an offer of a place on one of the Graduate Schemes offered by UBS Banking Group. Applicants for some positions may be asked to provide evidence of their numerical reasoning capabilities. Don't settle for 'try again next year'. Let us help you pass employer tests first time. Try now for free! How to pass the UBS Cultural Appraiser Test? To do well on the UBS Cultural Appraiser Test, candidates should focus on the following strategies: Get familiar with UBS's values and corporate culture: Understand UBS's dedication to cultural diversity and inclusivity to align your responses with the company's expectations. Go through common work-related scenarios: Study various workplace situations that involve cultural diversity and consider the best ways to handle them effectively and respectfully. Practice SJTs: Familiarise yourself with the format and structure of situational judgment tests by practicing similar assessments. This will help you feel more at ease with the test format and improve your decision-making skills. By preparing well and showcasing your ability to navigate work scenarios involving cultural diversity, you can enhance your chances of performing well on the UBS Cultural Appraiser Test. Answered questions: The same difficulty as real tests. Generally real employer selection tests don't differ that much in terms of difficulty which is why they compare your score against norm groups. Our practice tests are pitched roughly at graduate level, but this means they are actually suitable for preparing for all levels of job: entry, apprentice, graduate, senior, director, Yes, and PC, and Linux and smartphone and Android and...everything. Our practice tests will run on all systems and they are responsive so they will work well on tablets and smartphones too! Unlimited: You can take our practice tests as many times as you like; there is no limit. But to be honest, after taking the same test a few times you start to remember the answers, so that's why we have lots of tests. Join our Society partnership programme! Email us to learn more. UBS is a global leader in finance, offering graduates and interns the chance to make an impact early in their careers. Known for innovation and excellence, UBS provides a pathway to significant career growth. With the right preparation, you can confidently secure your place and achieve your career goals. The UBS Cultural Match is the most common UBS online test, assessing how well you will fit into the role you applied for and UBS' corporate environment, based on the UBS Principles and purpose. This is a Situational Judgement test in which you will be presented with 18 work scenarios followed by several statements. You need to choose which statement would be the most effective and the least effective. The test has no time limit and takes about 20 minutes to complete. Let's take a look - Read the following scenario: Your colleague approaches you while you are in the midst of implementing crucial changes from a client's review. They urgently request your assistance in preparing for a significant meeting with an important client scheduled for the next day. You are aware that the platform is still in the development process, and clients are yet to benefit from it. How would you respond? View Explanation Answer: This question is related mostly to Collaboration and Client Centricity. As such - Most effective - B Least effective - C Note: Once you get the email invitation to take the tests, you will have 4 days to complete both of them. Tip: Consider which UBS principle the question refers to, and choose your answers accordingly. Don't leave your success to chance! JobTestPrep's PrepPack is your essential toolkit for acing every UBS test. Get full UBS Cultural Match simulations, along with targeted practice and study guides for Aon's cut-e Numerical, Verbal, and Inductive Reasoning tests - start now and secure your future! In addition to the UBS Cultural Match, the UBS assessment can also include a series of cognitive ability tests, provided by video interview. Make sure to try to solve our Fun Assessment Practice Test. While most candidates will take the numerical reasoning test, some will also take verbal and inductive reasoning tests. The UBS numerical reasoning, the cut-e Scales Numerical, assessing your ability to comprehend, analyse, and evaluate numerical data presented in charts, diagrams, and tables. It includes 37 questions to complete in 12 minutes. Let's try to solve one! Click on a tab to see its contents. Use them to answer the question below. In fiscal year 1, Arclight's generated cash flow was about 60,000 Euros higher in the UK than in the US. View Explanation Answer: The words "cash flow" imply that the answer to this question is under the "Cash flow" tab. The graph presents the company's cash flow in four different areas, across a five-year period. Look at FY 1. In the UK cash flow was 920 thousand Euros, while in the US it was just 860 thousand. The difference is 920-860 = 60 thousand. The statement is therefore true. The correct answer is True. Tip: You can lose points even if you pick the correct tab with the wrong tab open. Thus, before submitting your response, take a moment and double-check that you have the right tab or window open before answering the question. Confusing Responses: The options are often similar, with no clear right or wrong answers. Unique Question Structure: Ranking choices from most to least effective is baffling, especially when all responses are being evaluated. To succeed, you need a deep understanding of UBS principles, insight into what the test is measuring, and the ability to align your responses with UBS's expectations. These skills aren't innate—they're developed through targeted practice. Start preparing now to familiarize yourself with real-life scenarios, refine your reactions, and confidently align your answers with UBS's values. The UBS verbal reasoning, the cut-e Scales verbal, assesses your ability to comprehend written material and analyse and interpret this information. It includes 49 questions to complete in 12 minutes. Let's check it out! Click on a tab to see its contents. Use them to answer the question below. According to Arclight's currency management policy, natural hedges are followed by 6 main essential values and working methods - Client centricity, Connectivity, Sustainable Impact, Accountability with Integrity, Collaboration, and Innovation. The UBS currency management policy, "Currency management" is a section focused on the "Finance management" tab. According to the test, "Arclight has been reduced" currency risks stemming from volatile exchange rates of foreign currencies by using natural hedges to minimise the difference between receipts and payments. This is merely a rephrase of the above statement, which is therefore TRUE. The correct answer is True. Tip: Compare the statement given in the question with the information you find in the tab, even if you think you know the answer. The UBS inductive logical thinking, the cut-e Scales cis, assesses your ability to identify patterns and rules. It includes 12 questions to complete in 12 minutes. Let's give it a shot! Observe the six upper diamonds and determine the colour of each of the bottom ones, from left to right: View Explanation Answer: The first step is to look for a pattern. If we can find a pattern for either colour, we can deduce any diamond that shares that pattern is of that colour and any that does not follow is the other colour. In this case, the pattern is that all tables with A's in all four corners are orange, so we mark the first two diamonds as orange and the rest as blue. Therefore, the answer (from left to right) is Orange, Orange, Blue, Blue. Tip: Don't make assumptions. For example, if you notice that the number of letters in each grid increases by 1, don't assume that the number of numbers will also increase by 1. Full Realistic Simulations Step into the corporate realm confidently with our immersive simulations, essential for mastering the UBS Cultural Match. Align with UBS Expectations Stand out from the competition with expert insights and strategies tailored for the UBS Online Assessment. Tailored Preparation Customize your preparation! Pinpoint weaknesses, target practice, and maximize efficiency for success. Start your preparation now for only £49 and unlock your potential! UBS places the highest value on selecting interns who align perfectly with their culture and corporate environment—proving your fit is key to unlocking incredible opportunities. The leading principles are called UBS pillars, which are - Capital Strength Simplification and efficiency Risk management These are Banking Group Functions Asset Management Each of these divisions offer an internship at a specific team. UBS Spring Week vs. UBS Summer Internship. Business Division/Team Name/Team Expertise Investment Banking/B COO You'll join a team who shapes the future direction of the bank. As one of the few banks that hire COO interns this role is a unique opportunity to explore our Investment Bank, meaningfully contribute and lead change. Investment Banking/Global Markets You'll be looking after professional investors like asset managers and fund managers. You'll give them advice and do everything that's needed to buy and sell securities for them. From start to finish. Investment Banking/Global Banking You'll work closely with the GB currency and sector coverage teams, as well as the other product teams. You will provide coverage, advisory, capital markets and financing solutions for corporate, financial institutions and sponsor clients. Group Functions/Group Risk Control/As a part of the risk function, you will help identify, assess, advise, decide, monitor and report on credit, market and operational risks, recommending appropriate mitigating actions. As part of the compliance function, you will focus on the regulatory and compliance framework applicable to the global compliance and operational risk control function of the UBS investment banking division. Group Functions/Operations You'll manage processes for performance, control and efficiency. The team's role is to deliver best-in-class post-trade services across Investment Bank, Wealth Management and Asset Management. Group Functions/Technology You will be working in IT, helping to source, develop, implement, maintain and support world-class technology solutions. Group Functions/Group Research You'll analyse company financials, perform fundamental analysis and explore scenarios with the objective of making stock recommendation to professional investors like asset managers and fund managers. Group Functions/Human Resources HR supports the business strategy by helping achieve sustainable business performance and global recognition for developing leadership. HR is made up of central and divisionally aligned teams that touch every aspect of an employee's experience, from recruitment to retirement. Asset Management/Asset Management/You'll help manage large-scale assets with well-diversified businesses across different regions. UBS Graduate scheme is a full-time annual placement. The UBS Graduate Talent scheme is an 18-24 programme designed to develop recent graduates into skilled professionals across areas such as Investment Banking, Wealth Management, Asset Management, Technology, and Group Functions. The programme offers rotations across different teams, providing broad exposure to UBS's global operations. Participants benefit from structured training, mentorship, and networking opportunities that build both technical skills and leadership capabilities. To apply, candidates must submit an online application, including their CV and academic transcripts, followed by the Aon/Cut-e online assessments that test verbal and inductive reasoning as well as cultural fit. Successful applicants then complete the Sonru video interview with competency-based questions. The final stage is an assessment centre, which can be in person or virtual, involving case studies, group exercises, presentations, and interviews. Whatever division you choose, you will have to apply to one area: Client Coverage Chief Operating Office Investment Area Investment Solution Real Estate & Private Markets Chief Operating Office Group Risk Control Human Resources Operations Technology Global Banking Global Markets (Sales and Trading) No matter what specific programme you apply to, your training will always start with UBS Discovery - a basic training to teach you what you need to know to work for UBS. After completion, you will start your journey in your specific business area, with occasional rotations in different parts of the bank. This is meant to give you a broad perspective on what UBS does. As a finance, business, or economics major, you already possess a strong natural and academic foundation in analytical thinking and problem-solving. Our UBS Assessment PrepPack is designed to build on these strengths while addressing areas where you may need extra focus. Leverage Your Knowledge: Apply your academic expertise to real-world scenarios with our test simulations. Strengthen Your Skills: Focus on areas like verbal reasoning and cultural alignment, where many candidates struggle. Quick-Study Tips: Save time with concise study resources tailored for finance and business minds. Whether you're navigating numerical tests, logical reasoning challenges, or the UBS Cultural Match, our materials are crafted to align with your academic background and set you up for success. All test results are valid for 6 months. Since this is a new year and a new application cycle, you would have to take the tests again. The email links are valid for 4 days and are expired automatically. Absolutely not. If you are a top candidate, it doesn't matter which university you come from. No, you cannot. UBS limits you to one application per academic year, so you should research and choose one team only. We do. At JobTestPrep find the assessment tests world highly diverse and fascinating. If you are looking to deepen your knowledge in the aptitude tests world, or you want some extra practice before our test, we've got you covered! Check out these fantastic free practice tests (all are completely free): Free Aptitude Test | Free Psychometric Test | Free Numerical Reasoning Test | Free Verbal Reasoning Test | Free Cognitive Test | Free Critical Thinking Test | Free Abstract Reasoning Test | Free Spatial Reasoning Test | Free Personality Test | Free Inductive Test | Free Mechanical Reasoning Test UBS, Talent Q (Korn Ferry) and other trademarks are the property of their respective trademark holders. None of the trademark holders are affiliated with JobTestPrep or this website. UBS is a Swiss bank that is perhaps most well-known for strict bank-client confidentiality, but in recent years UBS has moved further towards a more globally supportive institution that is forward-thinking and considerate of the needs of others. Established in 1862, UBS offers rewards and benefits throughout its global business area that are second to none - and that makes the competition for open positions throughout the business. UBS is co-headquartered in Basel and Zurich, Switzerland. Employing more than 70,000 people in 50 countries, UBS focuses on four business areas: Global Wealth Management, Personal and Corporate Banking, Asset Management, and Investment Banking. For those who are looking to work at UBS, knowledge of their and desired behaviours of employees is one of the most important things that you need to understand to be successful through the application process. These are known as the Three Keys: Pillars, Principles, and Behaviours. What are the UBS Three Keys? Pillars - capital strength, efficiency, effectiveness, risk management Principles - client focus, excellence, sustainable performance Behaviours - integrity, collaboration, challenge Types of jobs at UBS Job roles at UBS can be found in the following business areas: Global Wealth Management Investment Bank Asset Management Personal and Corporate Banking Operations Technology Finance Legal Internal Audit Internal Consulting Research Risk Control Compliance, Regulatory, and Governance Human Resources Marketing, Communications, and Branding Routes into employment with UBS are available to school leavers, who can take on an apprenticeship program to transition from school to the workplace while working towards a recognised qualification. University students can apply for several internship programs, to learn 'on the job' during summer breaks or as work placements while recent graduates can develop through a graduate program specifically for their chosen business areas. Experienced professionals are welcome at UBS, and the UBS Career Comeback program is aimed at experienced people who are returning to work after time off, such as for childcare reasons, offering them the opportunity to retrain while in a permanent position. UBS Application Process The UBS application process is simple, with a similar process for all entry routes. Application Form: this is a simple combination of personal, qualifications, and experience details that are specific to the role you are applying for. Online Assessments: Depending on the role or the route you are applying for, you will take at least one online assessment to test your aptitudes. Every applicant needs to take a numerical reasoning test. Video Interview: this is not a live interview, but applicants need to record a response to several interview questions. Final Assessment Day: this is a full day of interviews, face-to-face with line managers and senior leaders. UBS Online Application The online application is slightly different for school leavers seeking an apprenticeship, undergraduates looking for an internship, or graduates looking for a fast-track scheme. In these applications, recruitment happens once a year or so with each candidate only able to apply for one scheme at a time. For other candidates, the online application is linked to the specific advertised job. Once you have selected the role you are interested in, you will need to provide information such as your personal information, qualifications, and experience. When filling in the application form, keep in mind the competencies and behaviours that UBS wants to see in their employees, and be as accurate as possible. UBS Aptitude Tests The UBS online assessment, or Junior Talent Online Assessment v2, is the first screening stage when applying to UBS. It is an important part of the process to ensure that candidates are a good match for the role advertised, and the specific tests chosen for each route depend on what is needed in the role. UBS Numerical Reasoning Test UBS numerical reasoning test is an assessment of mathematical ability - although it does not require a vast knowledge of numbers. The test is about a candidate's ability to read, understand and extract data from tables and graphs and use it to answer questions. The UBS numerical reasoning test consists of 12 questions based on business scenarios, with potentially dozens of possible answers. Every applicant for a role at UBS needs to complete a numerical reasoning test. Unlike other numerical reasoning assessments, this one is not timed as a whole - instead, each question is used individually. Candidates have 90 seconds to answer the first question for each table, and 75 seconds for subsequent questions. This test usually takes about 20 minutes to complete. The difficulty of this assessment comes not from the content but the time constraints and the sheer number of potential answers. Applicants need to complete the mathematical problem, rather than use elimination - and if there is a question that you answer quickly, you will not be able to use the remaining time on other questions that you may struggle with. The mathematical equations are not complicated; they are based on GCSE-level knowledge of basic operations, percentages, ratios, and fractions. UBS Cultural Appraiser What is the UBS cultural appraiser assessment? It almost all application routes, as well as senior business leaders. These interviews might be completed in person at one of the UBS offices, or virtually (depending on the situation). These interviews are designed to allow candidates the opportunity to not only ask questions (and answer them) but also to market yourself and demonstrate that you have the personality, capabilities, and compatibility that will make you a productive and successful employee at UBS. Reddit and its partners use cookies and similar technologies to provide you with a better experience. By accepting all cookies, you agree to our use of cookies to deliver and maintain our services and site, improve the quality of Reddit, personalize Reddit content and advertising, and measure the effectiveness of advertising. By rejecting non-essential cookies, Reddit may still use certain cookies to ensure the proper functionality of our platform. For more information, please see our Cookie Notice and our Privacy Policy. The UBS Cultural Appraiser is a seemingly straightforward situational judgment test. In fact, it considers multiple variables, including the specific job requirements and UBS's principles and behaviors. This guide is (hopefully) going to give you everything you need to know to ace this test, including a complete test overview (content + interface), a free sample test, and prep recommendations. Have a question on the UBS Cultural Appraiser? Contact Us! 15 questions Situational Judgment Untimed Test geek and founder of Aptitude-Test-Prep.com What is the UBS Cultural Appraiser Test? The UBS Cultural Appraiser is a test used by UBS to assess how well a candidate's personality and behavior fit the company's values and the job requirements. The test presents you with 15 situational judgment scenarios (hypothetical work-related situations) and you are requested to choose the most and least effective responses. The test is administered by test provider Korn Ferry. Test Structure and Question Format The UBS Cultural Appraiser Assessment comprises 15 questions. Each question contains one hypothetical scenario and three possible responses. For each scenario, you will need to first select the most effective response, and then the least effective one. While the test is untimed, 20 minutes is the suggested time to complete. The UBS Cultural Appraiser assessment is more complex than may appear at first glance. It is a highly personalized test that considers the specific job you applied for as well as UBS's culture and values. Below is one sample question to show you what we mean. Recommended answer UBS Cultural Appraiser Preparation We strongly recommend JobTestPrep's UBS Assessment Preparation. Authentic mock tests, based on UBS values. Detailed explanations and personalized score reports. A money-back guarantee policy UBS Cultural Appraiser Preparation A full mock test A tailored, interactive study guide Money-back guarantee policy Bonus: Cognitive Prep Additional practice tests for UBS numerical, verbal and inductive reasoning tests. Full Disclosure: We are affiliated with JobTestPrep. Clicking the links helps us provide you with high-quality, ad-free content. What Does the UBS Cultural Appraiser Test Measure? (+Examples) The UBS Cultural Assessment measures your fit into two categories of traits: The specific traits required for the job you are after. The general corporate culture and values at UBS. That is what makes this test extra challenging - there really is no single set of correct answers, and it all depends on the job you are after. Show Job Description Traits Required for the Job Here are the main traits that emerge from this ad, which are basically what UBS is looking for in an analyst: Problem-Solving and Analysis - You are expected to demonstrate behavior that is through aims to get to the bottom of things and solve problems. Communication and Teamwork - You are expected to demonstrate cooperative, collegial, and open behavior towards members on your team and other teams. Risk Aversion - You are expected to demonstrate careful, methodical, and loss-minimizing behavior. Supervision - You are expected to show responsibility, thoroughness, adherence to procedures, and ability to hold others accountable. Proactivity - You are expected to take initiative and be able to self-manage. UBS Corporate Culture and Values These are traits and values UBS expects of all its employees. There are 9 traits in total, which UBS divides into 3 'keys' (see on UBS website): UBS Pillars These mostly describe the value UBS offers its clients. Less relevant for you as an employee, but still, Capital Strength - long-term ability to withstand changes in the market. Simplification and Efficiency - agility and response to client needs. Risk Management - effectively analyze, predict, and manage risk. UBS Principles These describe the general mindset UBS employees are expected to adopt. More relevant to you than the Pillars. Client Centricity - provide the best, most personalized service to clients. Connectivity - communicate with others effectively and cordially. Sustainable Impact - future perspective and long-term commitment. UBS Behaviors These describe the behaviors and norms expected from UBS employees on a daily basis. These are most relevant to you as an employee, especially in the context of the UBS Cultural Appraiser, which is a behavioral test. Accountability with Integrity - take responsibility and accountability for your actions, including your mistakes. Speak up when you see a mistake. Collaboration - trust others and be inclusive towards them. Innovation - actively seek feedback, learn from your mistakes, and strive for improvement. Here's a general illustration of how your UBS Cultural Assessment may look like: Each scenario is given as both text and as a brief video / sound file. For each scenario, you will need to pick the most effective response first, then the least effective. You cannot move between questions. The top bar shows your progress. You will be allowed one practice question before the actual assessment. If you haven't read the section on what the UBS Cultural Appraiser test measures in the Test Overview tab, we strongly recommend you do before solving this test. As we've explained, the best answers to the UBS Cultural Assessment depend on your position, as well as UBS's general corporate values. These questions should be solved with relation to the actual UBS analyst job ad below. Good luck! Show Job Ad Recommended Answer Recommended Answer and Explanation UBS Cultural Appraiser Preparation We strongly recommend JobTestPrep's UBS Assessment Preparation. Authentic mock tests, based on UBS values. Detailed explanations and personalized score reports. A money-back guarantee policy UBS Cultural Appraiser Preparation A full mock test A tailored, interactive study guide Money-back guarantee policy Bonus: Cognitive Prep Additional practice tests for UBS numerical, verbal and inductive reasoning tests. Full Disclosure: We are affiliated with JobTestPrep. Clicking the links helps us provide you with high-quality, ad-free content. There is currently only one viable prep option for the UBS Cultural Appraiser Test - JobTestPrep's UBS Prep Course. Below we will give you all the reasons why this is the ONLY prep course you can choose. All screenshots are taken from the actual preparation course. Full Disclosure: We are affiliated with JobTestPrep. Clicking the links helps us provide you with high-quality, ad-free content. Tailored for the Actual Test JobTestPrep's UBS Cultural Appraiser practice tests are tailored to the actual assessment's structure, format, and subject matter. Detailed Explanations Each question is accompanied by a detailed explanation, based on UBS's actual values. Personalized Score Reports With JobTestPrep, your score report will show correct, incorrect, and partially correct answers. This way, you will get a complete overview of your answers and where you should improve. Reddit and its partners use cookies and similar technologies to provide you with a better experience. By accepting all cookies, you agree to our use of cookies to deliver and maintain our services and site, improve the quality of Reddit, personalize Reddit content and advertising, and measure the effectiveness of advertising. By rejecting non-essential cookies, Reddit may still use certain cookies to ensure the proper functionality of our platform. For more information, please see our Cookie Notice and our Privacy Policy. UBS is the largest wealth management company in the world operating under four divisions which include investment banking, asset management, personal and corporate banking. The UBS graduate program is designed for early career seekers based mainly in London and other financial hubs worldwide. The UBS application process consists of four stages, UBS online application, UBS online assessment, UBS video interview, and UBS final assessment. The UBS Online Assessment section consists of 3 stages. UBS Culture match, UBS Inductive Reasoning, and UBS Numerical Reasoning. The UBS Cultural Appraiser assessment has now changed and is called the UBS Culture match assessment. The UBS online tests are carried out by Korn Ferry and AON Assessments. In this article, I will break down what it takes to pass all the stages of the application process. The UBS Culture match assessment consists of 18 questions where you will be presented with real-life work scenarios reflecting UBS's ways of working and culture, think of this as a situational judgment test or situational strengths tests. You will be presented with 18 realistic work scenarios along with a choice of actions to select. The aim of the assessment is to measure how well you will fit into the UBS role and corporate environment. The assessment has been carefully designed to measure how well you will fit into our role and corporate environment. The assessment is not timed so it's best to work through the questions at your own pace, however, it is recommended to give yourself 20 minutes to complete the test. Find somewhere quiet and free from interruptions. The practice question at the start will help you get familiar with the structure. In the UBS culture match or the UBS Cultural Appraiser practice question below, you are put in a new situation with your colleagues who are more experienced than you, Your task is to work together and complete work objectives. From the UBS 3 keys taking ownership is an important UBS core value so its important that you relish such an opportunity to work with more experienced colleagues as you'll learn and gain vital knowledge and skills. The most effective option will be to call your supervisor with tricky problems you can't fix on your own and the least effective will be to email your supervisor each week with a summary of all activities. It is important to seek help when something is tricky or blocked but managing your own professional growth and taking ownership should be your job, not your supervisors. UBS Culture match sample question 1 It is important to familiarise yourself with UBS core values or the UBS three keys when attempting the culture match questions. UBS's strong and inclusive culture is grounded in the three keys to success, which are listed and broken down below. UBS Online Assessment 2025 - UBS Culture match (Korn Ferry) The UBS Online Assessment 2025 - UBS Culture match is a comprehensive evaluation tool designed to help you understand whether your personal values and goals align with those of UBS, one of the world's leading financial services firms. I want this Our Pillars/Capital strength - a balance sheet for all seasons/Simplification and efficiency - make it easy to do business/Risk management - anticipate and handle risk effectively/Our Principles/Client centricity - clients are at the heart of everything/do/Connectivity - create success by connecting people, ideas, and opportunities/Sustainable impact - act today with tomorrow in mind/Our Behaviors/Accountability with integrity - take ownership/Collaboration - work as one UBS/Innovation - improve every day/UBS Culture match sample question 1 UBS Culture match sample question 1 UBS Inductive Reasoning Test This test measures your logical ability to find patterns and relationships in complex information. This test is timed and takes 6 minutes to finish. There is an opportunity to practice sample questions which are untimed and help you to familiarise yourself with the assignment on the left side of the screen two grids that have a unique pattern each. On the right side of the screen are four grids. Two of these grids follow the same rule as the two grids on the left side of the screen. The other two grids do not follow this rule. To answer each question, you must select those two grids that follow the same rule as the two given grids. In the next step, you will learn how to select an answer. UBS Inductive reasoning practice question 1 The two grids on the left have TWO unique patterns, the number of objects in the box and the position of the objects. Grid 1 has 9 objects in each box and they are all positioned in order with identical objects on the right side, the two boxes with identical objects and the same orderly pattern of an object are clear the red cross and blue triangles. UBS Inductive reasoning practice question 2 The example above has two boxes, each box has 3 distinct objects with exactly orderly positions objects, the boxes on the right will have to follow the same rule to be correct as can be seen above selected. In each task, two grids that follow a common rule are presented on the left side of the screen. Your task is to discover the rule that links these two grids and mark the two grids on the right side of the screen that follow the same rule. The rule always relates to the number and position of objects within a grid and not to a logical NOT or OR statement. The different colours and shapes of the objects in the grids are simply to make them easy to distinguish. UBS Online Assessment Inductive Reasoning Test 2025 The UBS Inductive Reasoning Test is a timed assessment that measures a person's logical ability to identify patterns and relationships in complex formations. It takes 6 minutes to complete. I want this!! UBS Numerical Reasoning Test The UBS numerical reasoning test provider for 2025 is AON Assessments. The test contains 37 tasks. You will be given 12 minutes to complete these 37 tasks. Most people cannot complete all 37 tasks in 12 minutes so don't panic if you are running out of time to complete the test. Focus on accuracy and then speed. This will be the best strategy to pass the Aon tests. The information on the data sheets will not change during the test. UBS Numerical reasoning assessment powered by Aon/UBS is looking for candidates that fit into their culture of work personally and professionally, you also have to demonstrate your skills technically hence the UBS numerical reasoning assignment. The UBS numerical reasoning test checks your ability to analyse and evaluate data from tables and diagrams. You need to be able to evaluate statements presented to you and decide if the individual statements are true based only on the information contained in the brief, like the UBS sample question below. UBS Numerical Reasoning Sample Question 1 How do I pass the UBS Numerical Reasoning test? First, read the statement then select and look at the dataset you need for reevaluation of that statement. After doing so, evaluate the statement. Select TRUE if the statement is absolutely true given the information contained in the brief. Select FALSE if the statement is absolutely untrue given the information contained in the brief. Select CANNOT SAY if you cannot say beyond doubt, without further information, whether the statement is true or false based on the information contained in the brief. Each statement relates to a singular dataset. How hard is UBS numerical test? Below are two examples of UBS numerical test, its not difficult but the time pressure makes it more intense, so its best to practice as much as possible. UBS Numerical Reasoning Sample Question 2 The statement above wants you to evaluate the value of shares in year 7. From the table above ordinary shares at the beginning of the financial year, 7 are 1600 and at the end of year 7 it is 1500, so the statement is TRUE, the value is lower by the end of FY 7. UBS Numerical Reasoning Sample Question 3 with dataset. The statement above is hard to work out from the graph given since there are no absolute numerical values only percentages so the answer is CANNOT SAY. UBS Online Assessment 2025 UBS Numerical Reasoning Test. The UBS Numerical Reasoning Test is a comprehensive evaluation tool designed to assess your ability to understand and interpret numerical data. I want this!! UBS Programmes early careers/UBS is hiring on a rolling basis. This means that once they have filled all available spots, they will stop looking at new applications. Apply as early as possible to secure a spot. UBS Spring Insight Program. Students in their first or second year of a 3-year or 4-year course can take the Spring Week, a 3-day insight program. The purpose of this program is to give you an insight and glimpse of UBS working culture and environment. This program will rotate you between different divisions of the bank, including global banking, global markets, risk, and technology. A tour will give you a chance to see what each division does up close. To guide you through the early stages of your career, as well as to help you figure out what you like about investment banking. You will receive accelerated processing for your summer internship application during the spring week. UBS Summer Internship. On this 10-week summer program, you'll be a real part of the team, working with UBS experts and learning about the industry. UBS clients, and a specific area of the firm. You'll have plenty of opportunities to develop new skills and make contacts. And if you impress UBS, you will have the opportunity to join the UBS Graduate Talent Program once you've graduated. UBS Graduate Program. The UBS Graduate Scheme or the UBS Graduate Talent Program is a permanent contract role for new graduates who want to get into a career in banking and finance. The graduate talent program is designed to ensure that you'll have an in-depth introduction to the UBS firm and the business you will be part of. You'll start your UBS experience by participating in UBS Discovery, a 3-day program that will bring you up to speed on our industry, strategy, capabilities, and culture. In the graduate program which will last 18-24 months, you will be assigned to one specific business unit within the business within the first three divisions: Investment Bank/Asset Management/Corporate Center/FAQ If you have completed the UBS online assessment do I have to do it again when applying for a new role? You don't have to do the UBS online assessment when applying for other roles within UBS as long as you've passed the test within the last 6 months. How long do I have to complete the tests once I get the email? You will have 5 days from the invitation to complete the assignment. Do only target-school students get accepted for a UBS program? Any candidate from all schools are welcome there is absolutely no discrimination against other schools or universities I haven't decided which area of the bank I am more interested in. Can I apply for several summer internship programs? UBS limits your applications to 1 a year so be sure to pick the right program